



SanDisk® uSSD 5000

Installing Microsoft Windows® Image

Application Note

January 2008

SanDisk Corporation

www.sandisk.com

Document Control Information

	Title	Name	Date
Prepared by:	Product Applications Engineer	Oren Cohen	1/9/2008
Approved by:	Director of Technical Marketing	Nimrod Wiesz	1/9/2008

Revision Control

Date	Description	Rev.	Author
1/9/2008	uSSD 5000 Installing Microsoft Windows Image	1.0	Oren Cohen

TABLE OF CONTENTS

1.	INTRODUCTION	4
1.1	APPLICABLE OPERATING SYSTEMS	4
1.2	PREREQUISITES.....	4
2.	INSTALLING THE MICROSOFT WINDOWS IMAGE	5
2.1	PREPARING THE USSD.....	5
2.2	CREATING THE MICROSOFT WINDOWS IMAGE	6
2.3	DISABLING VIRTUAL MEMORY IN WINDOWS	6
3.	KNOWN ISSUES	7

1. Introduction

When the Microsoft Windows® image is installed on your SanDisk uSolidStateDrive (uSSD) device, you can use the device to boot Microsoft Windows.

This application note provides step-by-step guidelines for installing the Microsoft Windows image on your SanDisk uSolidStateDrive (uSSD) device.

1.1 *Applicable Operating Systems*

This document applies to the following Microsoft Windows versions:

- Windows Server 2003®
- Windows XP Professional®
- Windows XP Home Edition®

1.2 *Prerequisites*

In order to boot Windows using your uSSD device, the following prerequisites must be met:

- Host platform running a Windows operating system with a CDROM drive
- Target platform without HDD
- USB adapter for uSSD (UDOC-2X5-ADPT-P)
- uSSD device
- Microsoft Windows Installation CD
- uSSD 5000 boot kit (Ntdetect.com; uDOCBoot.in_; uDOCBoot.inf; uDOCBoot.sy_; udocset.inf; unattend.txt; uSSDWinPEPatch.exe)

2. Installing the Microsoft Windows Image

The process of installing the Microsoft Windows image on uSSD device comprises the following stages:

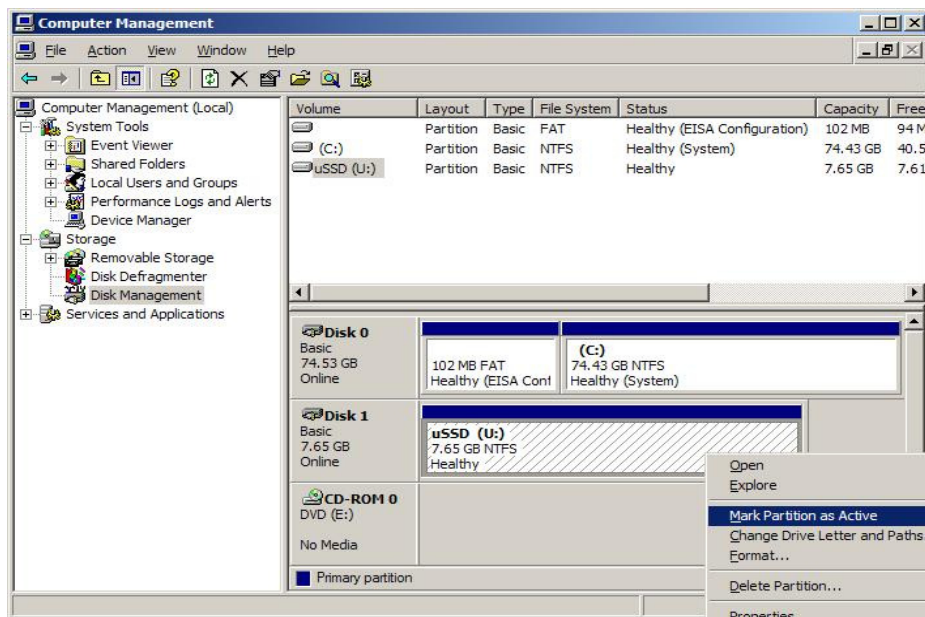
- Preparing the uSSD Device (see section 2.1)
- Installing the Image (see section 2.2)
- Disabling the Virtual Memory (recommended) (see section 2.3)

2.1 *Preparing the uSSD*

Before you can create the image on the uSSD, you need to create a file system and format the partition.

To prepare the uSSD:

1. Attach the uSSD chip to the companion USB adapter, and plug it into a USB slot on the host computer.
2. Once uSSD device has been detected, delete the partition/volume (if exist) create a new File System and format the partition using the Windows XP Disk Management Utility.



3. After formatting the partition, right-click the partition in the Computer Management window and select **Mark Partition as Active**.

You are now ready to install the Windows image on the uSSD.

2.2 *Creating the Microsoft Windows Image*

The SanDisk uSSD installation package for Windows automatically searches for the Windows installation CD and the uSSD. The installation utility subsequently copies and prepares the necessary files on the uSSD.

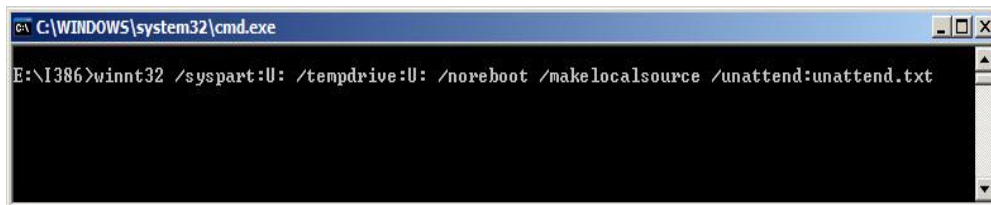
To create the image:

1. Insert an original Windows installation CD into the CDROM drive of the Host platform.
2. Verify that the uSSD device is connected.
3. Extract the **uSSD 5000 boot kit** folder to the Host platform.
4. From the command prompt, run the following command:

```
E:\I386>winnt32 /syspart:U: /tempdrive:U: /noreboot  
/makelocalsource /unattend:unattend.txt
```

where **U** is the uSSD device and **E** is the CDROM drive.

The command creates the Microsoft Windows image on the uSSD.



5. From the command prompt, launch **uSSDDWinPEPatch.exe**. This patch adds boot support for uSSD.
6. Remove the uSSD device from the Host platform.
7. Plug the uSSD device into the Target platform and power the platform on. The installation process continues on the Target platform.

2.3 *Disabling Virtual Memory in Windows*

It is strongly recommended to disable the virtual memory functionality when running Windows from the uSSD as this requires several hundreds of MB of memory to work effectively. The consumption of such a large amount of uSSD memory can prevent from the operating system from booting.

To disable virtual memory:

1. Right-click **My Computer** and select **Properties > Advanced > Performance Settings > Advanced > Virtual Memory Change**.
2. In the Paging file for selected drive area, select the **No Paging File** option.
3. Click **Set** and then click **OK**.

3. **Known Issues**

- Hibernation is not supported.
- Windows Crash Dump File storage is not supported.
- Windows Page File is not supported.

SanDisk® Corporation general policy does not recommend the use of its products in life support applications where in a failure or malfunction of the product may directly threaten life or injury. Per SanDisk Terms and Conditions of Sale, the user of SanDisk products in life support applications assumes all risk of such use and indemnifies SanDisk against all damages. See “Disclaimer of Liability.”

This document is for information use only and is subject to change without prior notice. SanDisk Corporation assumes no responsibility for any errors that may appear in this document, nor for incidental or consequential damages resulting from the furnishing, performance or use of this material. No part of this document may be reproduced, transmitted, transcribed, stored in a retrievable manner or translated into any language or computer language, in any form or by any means, electronic, mechanical, magnetic, optical, chemical, manual or otherwise, without the prior written consent of an officer of SanDisk Corporation.

Product names mentioned herein are for identification purposes only and may be trademarks and/or registered trademarks of their respective companies. SanDisk and the SanDisk logo are trademarks of SanDisk Corporation, registered in the United States and other countries.

© 2008 SanDisk Corporation.